

Getting started with Lexia Reading® is easy!

Step 1 Setup your account

Follow the **Lexia Reading – Getting started for Administrators Guide** using the login supplied to register students and create user names, passwords.

Before giving students their user names ensure you have also assigned them to a Reading Program as per the guide.

Step 2 Technical Information

Know the technical information for your school.

A table is provided below to assist with information that may be required.

Some schools have proxy settings with varying combinations of the following – if necessary ask the IT person which ones if any will apply for your school.

Proxy Address :	
Proxy Port :	
Proxy User :	
Proxy Password :	
Operating System: (for student computer)	Windows / Mac (circle one)

Step 3 Student Computers

Before you begin you will need :

- ▶ School Information and Proxy server settings if applicable (Step 2)
- ▶ Customer Code (as emailed to schools Lexia Administrator).

1. If you have not already, download the student software.
 - a) Go to this page on Lexia NZ website: <http://www.lexialearning.co.nz/lexia-reading>
 - b) Click on [Click here for Student Download](#)
 - c) Click on [Agree](#) button at bottom of *Lexia Reading®* License Agreement
 - d) Click the International Version "Full Download v6.0.1" link for your operating system Mac (.dmg) or Windows (.exe)
 - e) [Save](#) to Flashdrive or similar memory device.
2. Install the Lexia Reading program by running from saved downloaded file.

Follow the installation prompts to configure Student Software applying the options and screenshots provided below for both Windows and Mac Installs. *(Screen Picture 1)*
3. Double Click on the Lexia Reading icon which appears on the desktop to run the program, or locate in your Applications for Mac users. *(Screen picture 2)*

You will see a Student Login screen *(Screen picture 3)*. You are ready to begin!

Login using a student User name and password you have created (Step 1).

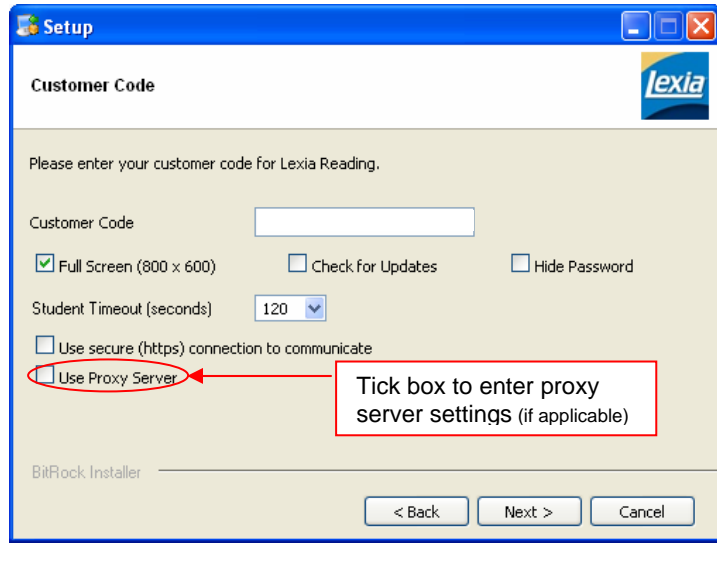
Click on Stop (top right) to exit.
4. For speedy setup of other student computers, you can copy the now configured program file from this first computer to other computers, or repeat 1-3.

Please contact us by phone or email support@lexialearning.co.nz if you require any assistance.

Screen Picture 1 – Configuring Student Software

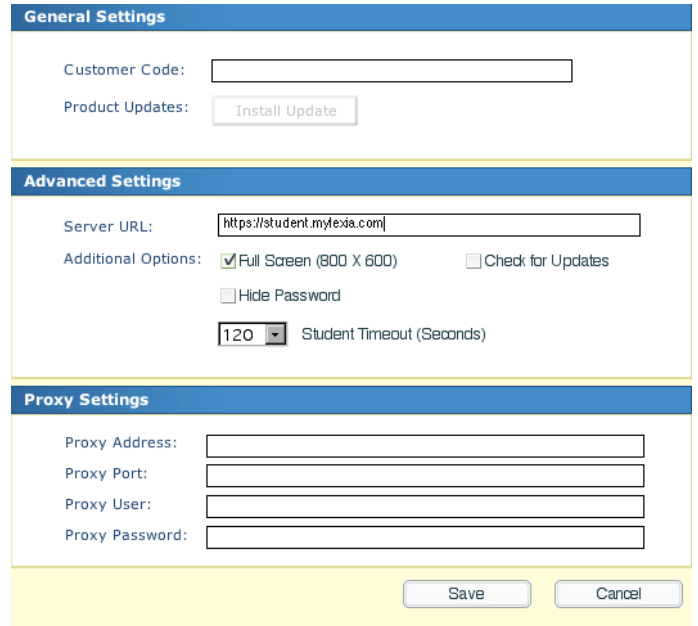
WINDOWS

- Tick *Full Screen (800x600)*
- Un-tick *Check for Updates*
- Un-tick *Use secure (https) connection to communicate*
- Tick *Use Proxy Server* only if your school has proxy server settings (a second screen for Proxy settings will appear in next step if ticked).
- Click Next and continue to follow installation prompts entering proxy settings if required.



MAC

- Tick *Full Screen (800x600)*
- Un-tick *Check for Updates*
- Change Server URL removing 's' in **https**
- Complete Proxy Settings section only if your school has proxy server settings.
- Click Next and continue to follow installation prompts.



Screen Picture 2 – Desktop login Icon



Screen Picture 3 - Student Login

