

Overview

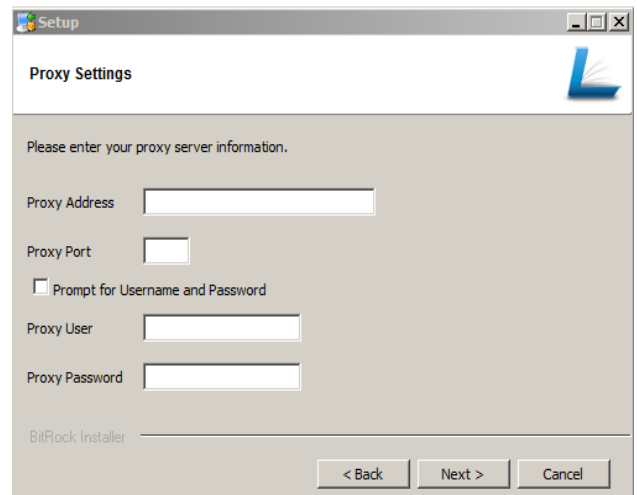
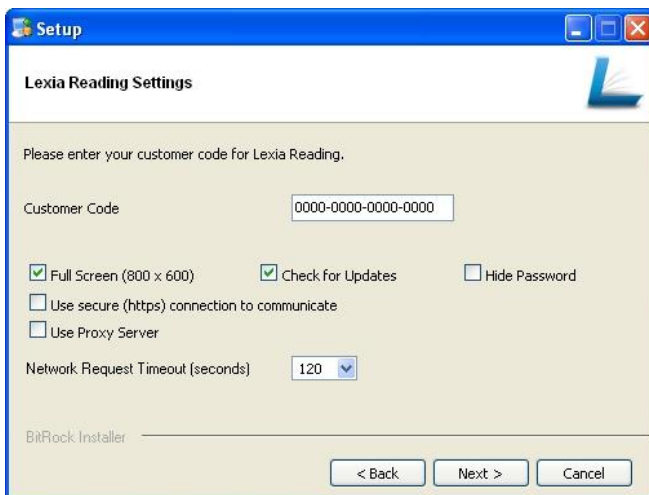
The Lexia Reading program has 2 modules:

- i) **Student module** - you need to install the Lexia Reading program on each student workstation. The program does not run from a network server. It uses a web-based database to store student data and school licence information.
- ii) **Teacher (admin) module** - No installation required. This is accessed from any computer connected to the internet, using the login username and password emailed to the Lexia Administrator nominated by the school upon order.

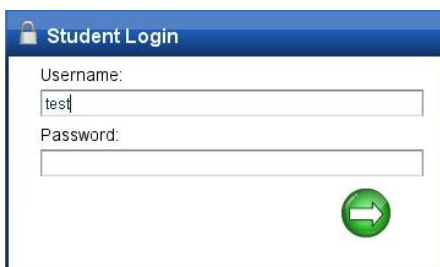
Windows Student Module Installation

The following outlines the installation of the Lexia Reading program to student workstations:

1. Install the windows install file from the enclosed USB memory stick.
(Lexia Reading/Windows Student Software Download)
Or download and install from:
<http://www.lexialearning.com/support/lexiareading/license.html> (Select UK/Aust/NZ Version)
2. Enter the schools unique customer code in the popup screen.
3. Enter the other options as shown below. If you have a proxy server tick the Use Proxy Server option.
4. Enter the proxy settings as appropriate for your school (Tick on first screen to get Proxy Settings box).



5. On completion of the install – run the program from the icon on the desktop.
6. Login using the username **test**. No password.



Installation is now complete

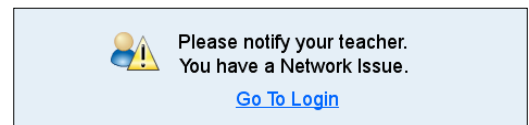
For non-MSI installs you can install on other workstations by repeating the process; or copying the 'Lexia Reading UK' folder to other workstations and putting a shortcut into the user's profile. (Refer to 'Installation Options' next page for other options.)

Technical Notes

Lexia Reading requires access to the following URL's/IP addresses: update.lexialearning.com 72.32.30.18 www.mylexia.com 12.130.26.140 student.mylexia.com 12.130.26.140	System Requirements (Win Student workstations): <ul style="list-style-type: none">▪ Windows XP (SP3), Vista, Windows 7▪ At least 256 MB RAM▪ At least 500 MB hard drive space▪ Speakers or headset (headset recommended)▪ 32 MB accelerated video graphics card or better▪ Minimum screen resolution of 800x600▪ Persistent Broadband Internet Connection; (On average a student will use 100 bytes of bandwidth every 1.5 minutes of use)▪ Access to student.mylexia.com and update.lexialearning.com must be white listed on firewall/proxy
--	---

Troubleshooting Hints

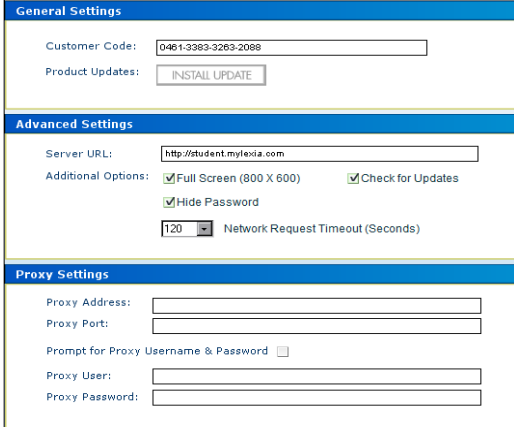
This error message (*right*) indicates that the program is not able to connect with the Lexia server. Either the internet is not accessible or the proxy server is blocking access to the Lexia server.



To check settings, on program start up hold down the A and S keys for about 10 seconds.

This will bring up the General Settings screen (*right*) which allows you to check and update settings if required.

- If port 443 is blocked changing the server URL from https: to http: will enable access to the Lexia server.
- Please also check your Customer Code is correctly entered and that your Proxy Settings are okay.

A screenshot of the software's settings interface. It is divided into three sections: "General Settings", "Advanced Settings", and "Proxy Settings".
- **General Settings:** "Customer Code:" field contains "0461-3383-2263-2088". "Product Updates:" has an "INSTALL UPDATE" button.
- **Advanced Settings:** "Server URL:" field contains "http://student.mylexia.com". "Additional Options:" includes checkboxes for "Full Screen (800 X 600)" (checked), "Check for Updates" (checked), and "Hide Password" (checked). A "Network Request Timeout (Seconds)" field is set to "120".
- **Proxy Settings:** Fields for "Proxy Address:", "Proxy Port:", "Proxy User:", and "Proxy Password:" are present. A checkbox for "Prompt for Proxy Username & Password" is unchecked.

Windows Installation Options

Copy – Lexia Reading can be installed on other workstations by repeating the initial install process, or by copying the 'Lexia Reading UK' folder and the desktop shortcut to other workstations.

MSI Installer – Lexia provides a separate MSI installation package that can be modified to contain all customer-specific information, and then deployed using Active Directory or any other deployment tool that supports MSI. MSI installer and instructions are both available on the downloads page see: <http://www.lexialearning.com/support/lexiareading/license.html>

Remote/Unattended Install – School technicians can configure student computers to call a batch file at startup. Lexia offers a command line installer with configuration options that contain all necessary parameters. For detailed instructions and sample files, see: <http://www.lexialearning.com/files/support/LexiaReadingCmdInstall.pdf>

Base Image Install – Adding the Lexia Reading software to your system disk image and then reimaging your computers is always an option. For detailed instructions on installing and configuring the student software see: <http://www.lexialearning.com/files/support/LexiaReadingInstallationInstructions.pdf>

Overview

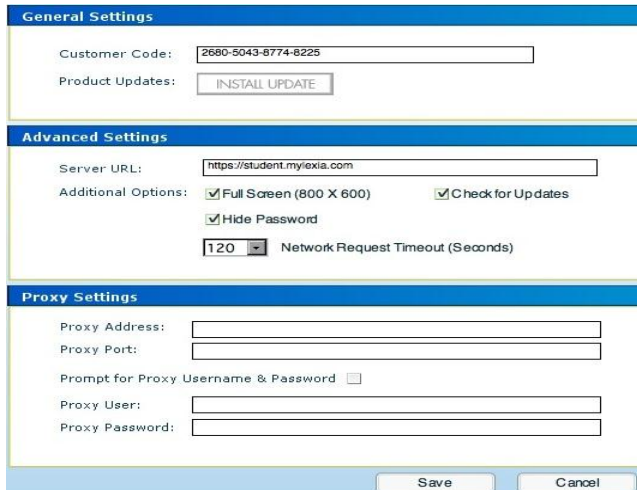
The Lexia Reading program has 2 modules:

- i) **Student module** - you need to install the Lexia Reading program on each student workstation. The program does not run of a network server. It uses a web-based database to store student data and school licence information.
- ii) **Teacher (admin) module** - No installation required. This is accessed from any computer connected to the internet, using the login username and password emailed to the Lexia Administrator nominated by the school upon order.

Mac Student Module Installation

The following outlines the installation of the Lexia Reading program to student workstations:

1. Install the Mac install file from the enclosed USB memory stick.
(Lexia Reading/MAC Student Software Download)
Or download and install from:
<http://www.lexialearning.com/support/lexiareading/license.html> (Select UK/Aust/NZ Version)
2. Copy the Lexia Reading UK icon to the applications folder. *(right)*
3. Enter the schools unique customer code in the popup screen.
4. Enter the other options as shown: *(below)*
5. On completion of the install – run the program from the icon.



6. Login using the username **test**. No password.



Installation is now complete

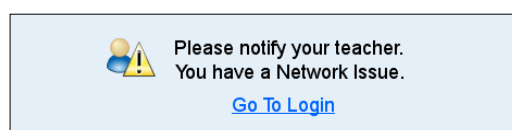
You can install on other workstations by repeating the process; or copying the 'Lexia Reading UK' folder to other workstations and putting a shortcut into the user's profile. (Refer to 'Installation Options' next page for other options.)

Technical Notes

<p>Lexia Reading requires access to the following URL's/IP addresses:</p> <p>update.lexialearning.com 72.32.30.18 www.mylexia.com 12.130.26.140 student.mylexia.com 12.130.26.140</p>	<p>System Requirements (Mac Student workstations):</p> <ul style="list-style-type: none"> ▪ MAC OS X10.4 or higher. ▪ At least 256 MB RAM ▪ At least 500 MB hard drive space ▪ Speakers or headset (headset recommended) ▪ 32 MB accelerated video graphics card or better ▪ Minimum screen resolution of 800x600 ▪ Persistent Broadband Internet Connection; (On average a student will use 100 bytes of bandwidth every 1.5 minutes of use) ▪ Access to student.mylexia.com and update.lexialearning.com must be whitelisted on firewall/proxy
--	---

Troubleshooting Hints

This error message (*right*) indicates that the program is not able to connect with the Lexia server. Either the internet is not accessible or the proxy server is blocking access to the Lexia server.



To check settings, on program start up hold down the A and S keys for about 10 seconds. This will bring up the General Settings screen (*right*) which allows you to check and update settings if required.

General Settings

Customer Code:

Product Updates:

Advanced Settings

Server URL:

Additional Options: Full Screen (800 X 600) Check for Updates
 Hide Password

Network Request Timeout (Seconds)

Proxy Settings

Proxy Address:

Proxy Port:

Prompt for Proxy Username & Password

Proxy User:

Proxy Password:

- If port 443 is blocked changing the server URL from https: to http: will enable access to the Lexia server.
- Please also check your Customer Code is correctly entered and that your Proxy Settings are okay.

Mac Installation Options

Copy – Lexia Reading can be installed on other workstations by repeating the initial install process, or by copying the 'Lexia Reading UK' folder and the desktop shortcut to other workstations.

Apple Remote Desktop – Schools using Apple Remote Desktop can create a custom package to distribute Lexia Reading across the network. For detailed instructions, see: <http://www.lexialearning.com/products/mylexia/faq/appleremote.html>

Base Image Install – Adding the Lexia Reading software to your system disk image and then reimaging your computers is always an option. For detailed instructions on installing and configuring the student software see: <http://www.lexialearning.com/files/support/LexiaReadingInstallationInstructions.pdf>