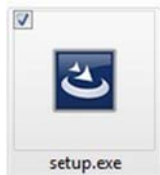


Installing and Configuring *Cross Trainer Database Service and Data Monitor for Windows Server 2003/2008 Installation*

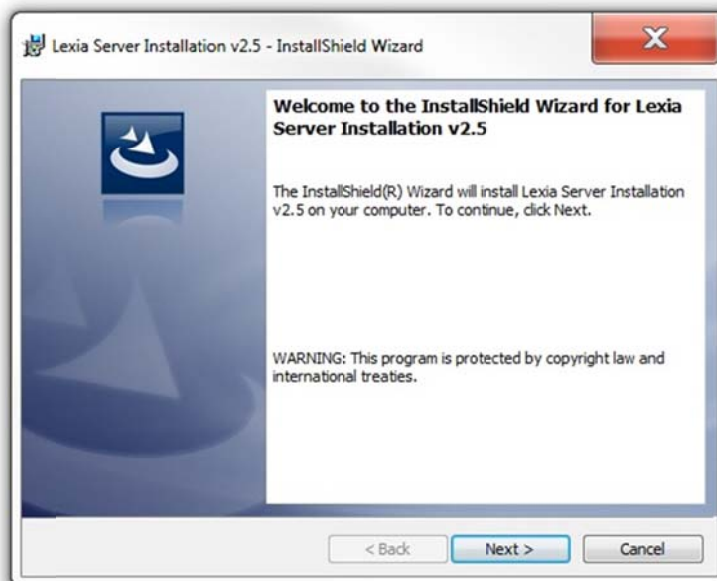
Please backup your existing database and remove any previous versions of cross trainer before continuing. Please refer to the “Lexia Maintenance” Instructions on page 11.

Installing *Cross Trainer Database Server Service and Data Monitor*

1. **Create** a folder on your server called “**LEXIA**” where you are going to run the “*Lexia Data Monitor*” and “*Lexia Database service*” from.
2. Double-click on the **Setup.exe** file to start the installation. This file can be found in the “LEXIA\Lexia Server” folder on the CD.



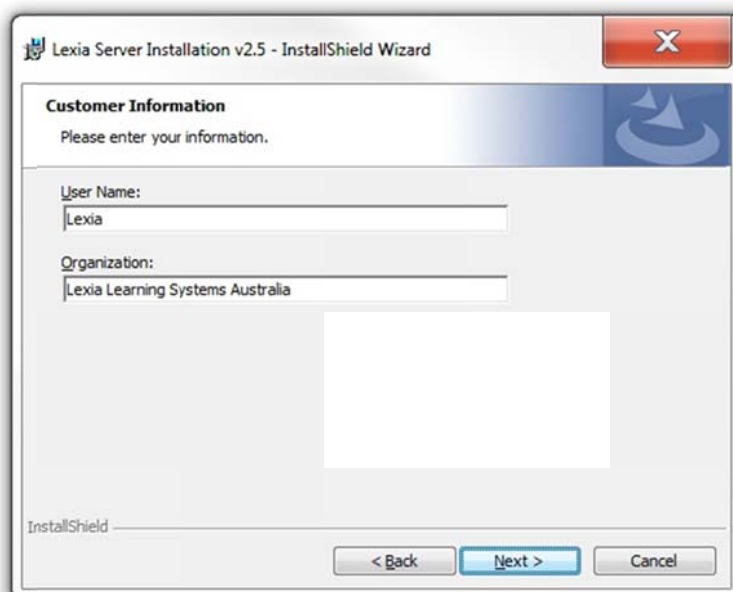
3. The setup installation wizard displays. Click **Next**.



4. Read the terms of the license agreement, and click **I accept the terms in the license agreement**. If you do not accept the license agreement, the installation will not proceed. Click **Next**.

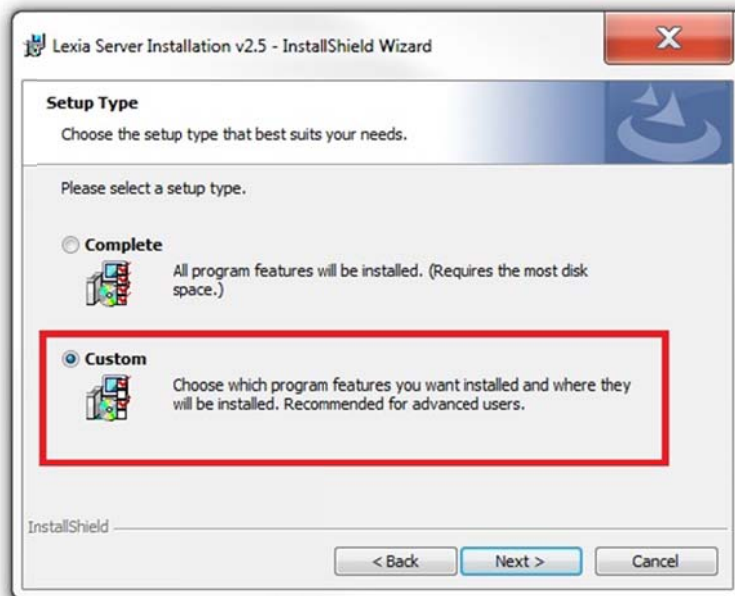


5. Please enter your customer information including your **user name** and your **organization**. Click **Next**.

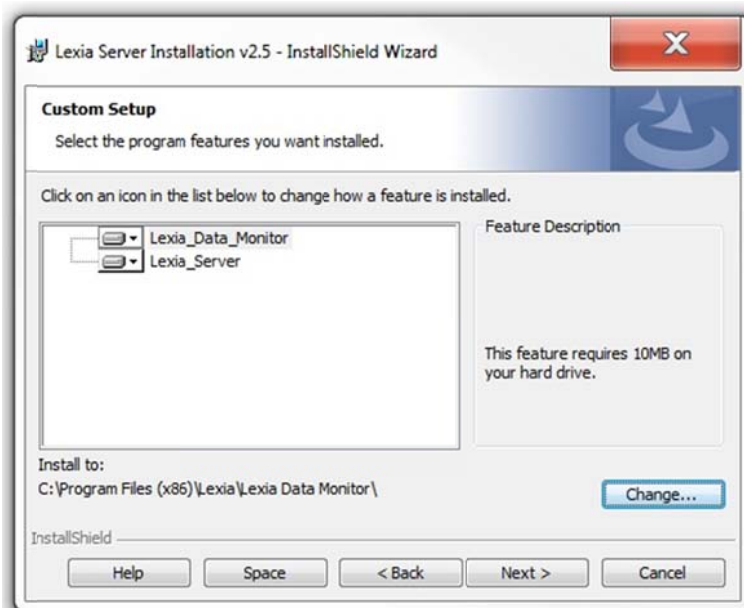


- Please select **“Custom”** Installation then click **Next** to continue the installation process.

Cross Trainer Database Server Service and Data Monitor files will be installed into “C:\Program Files\Lexia\LexiaServer” and “C:\Program Files\Lexia\Lexia Data Monitor” by default.



- The following window (as shown below) is displayed. Now **single left click** on the words **Lexia_Data_Monitor** then **single left click** on the **change** button.

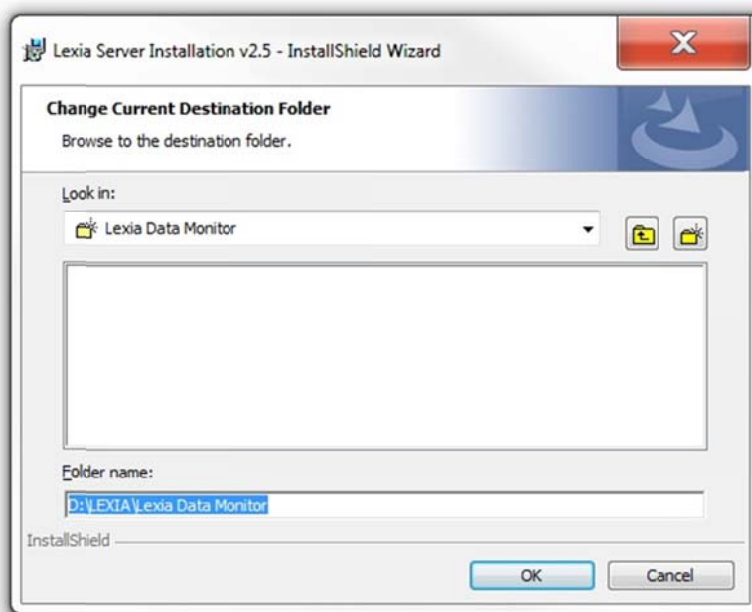


8. After you have clicked on the change button the following window (as shown below) is displayed.

In the folder name box, please type in the location of your LEXIA folder, followed by Lexia Data Monitor. Then click OK

e.g. if you made a LEXIA folder on D:\ Drive you would type the following

D:\LEXIA\Lexia Data Monitor

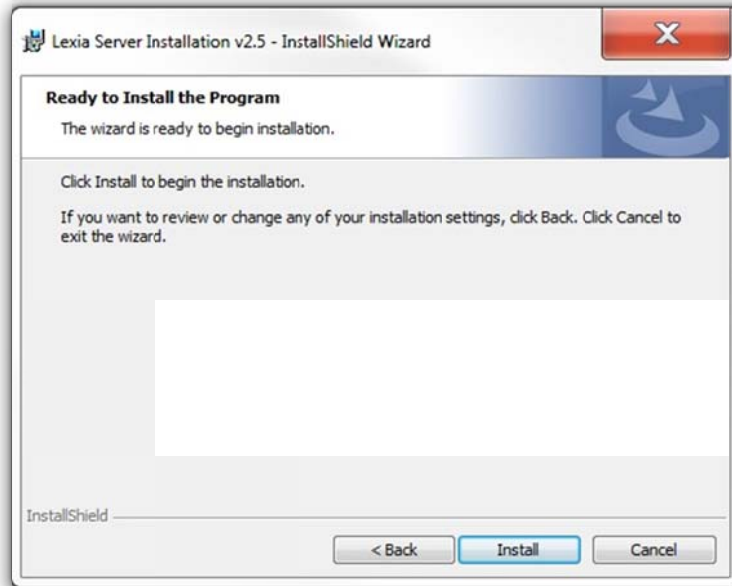


9. Repeat steps 7 and 8 but this time click on the **Lexia_Server** words, click change button and type the following into the Folder Name box. Then click OK

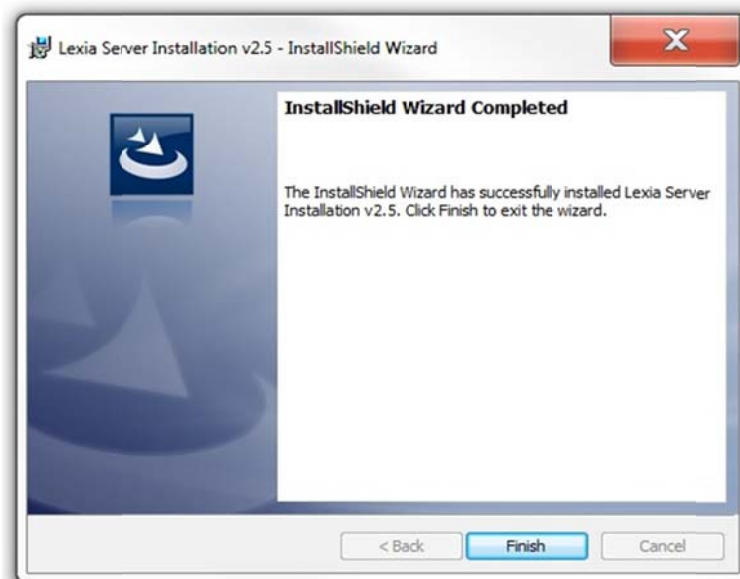
D:\LEXIA\LexiaServer

You would type the above in the Folder Name Box if you made a LEXIA folder on D:\ Drive

10. please click **Install** to continue the installation.



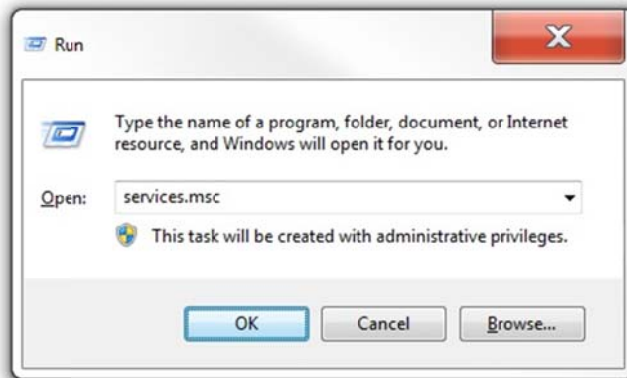
11. When you see a message that the **InstallShield Wizard Complete**, click **Finish**.



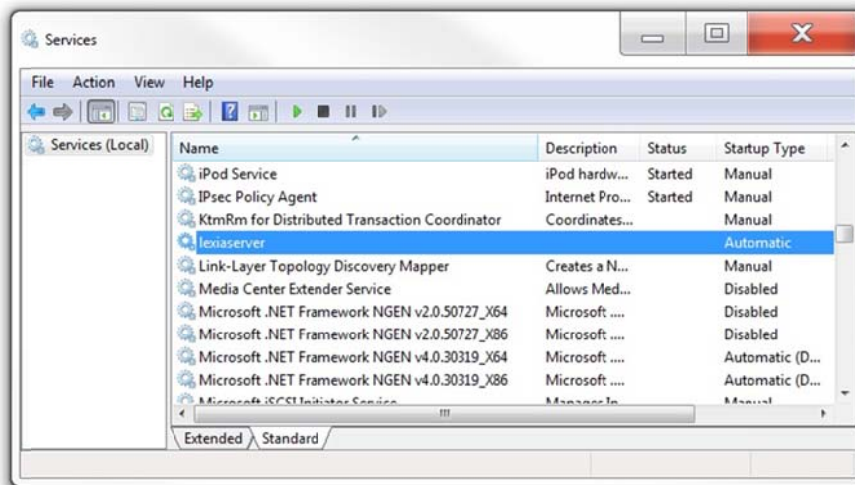
You have now successfully completed the Server Installation. Please proceed to Step 11 for configuring your installation.

Configuring Cross Trainer Database Server Service

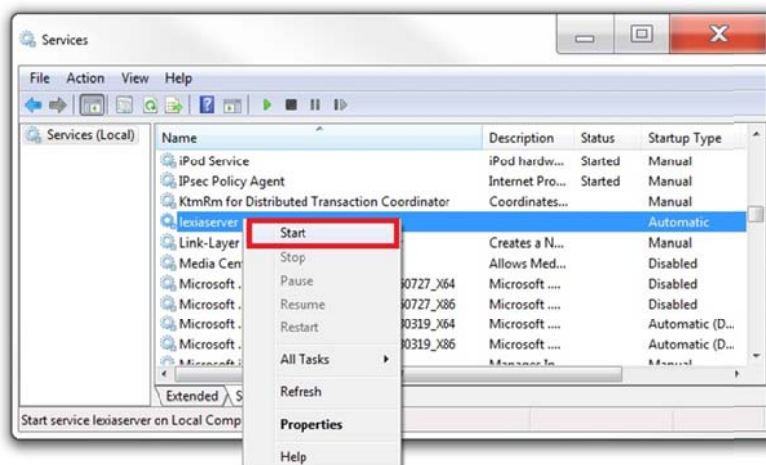
12. Please click the **START** button and click **Run**. Type **services.msc** in the run box and then click the **OK** button to continue. You may get a “Require Administrative permission” message displayed on the screen, please click the **Continue** button.



13. You will now get a **Services** window popup. Please scroll down the list of services and find the **lexiaserver** service.

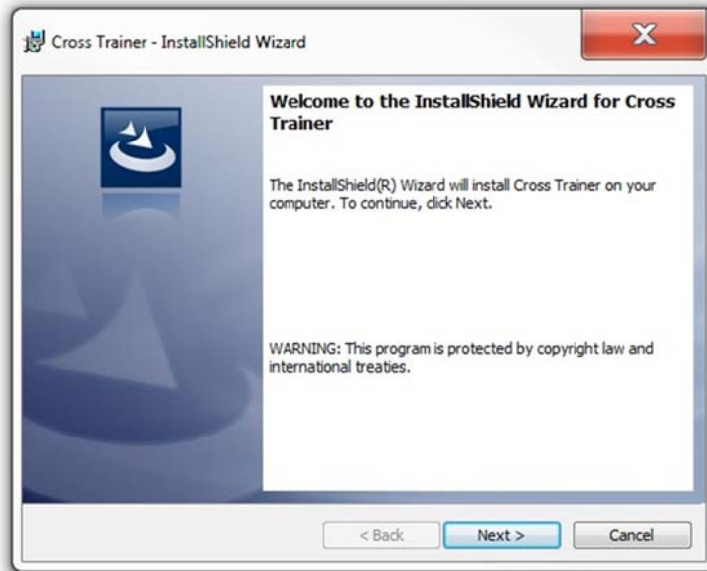


14. Once you located the **lexiaserver** service. Please click the **Right Mouse Button Once** on the word **lexiaserver** and select **Start** from the dropdown menu.



Installing *Cross Trainer*

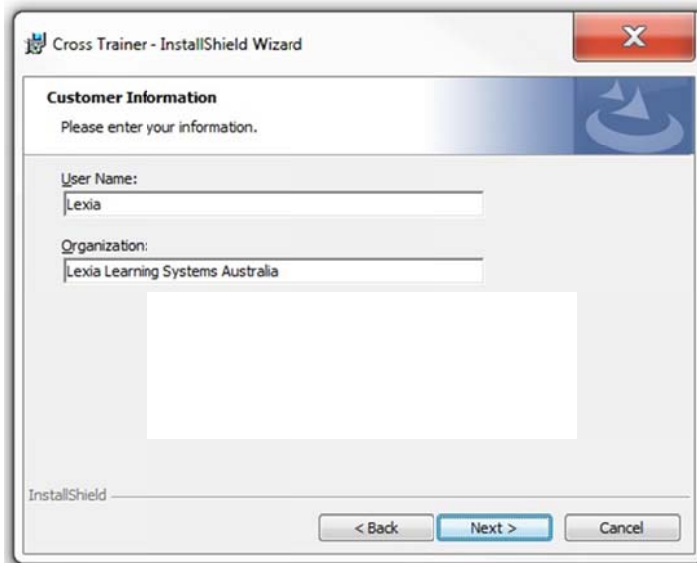
1. Create a folder in your shared applications folder on your server called **LEXIA**.
2. Run **Setup.exe** from the “LEXIA\Lexia Learning” folder on the CD.
The following window is displayed. Click **Next** to continue.



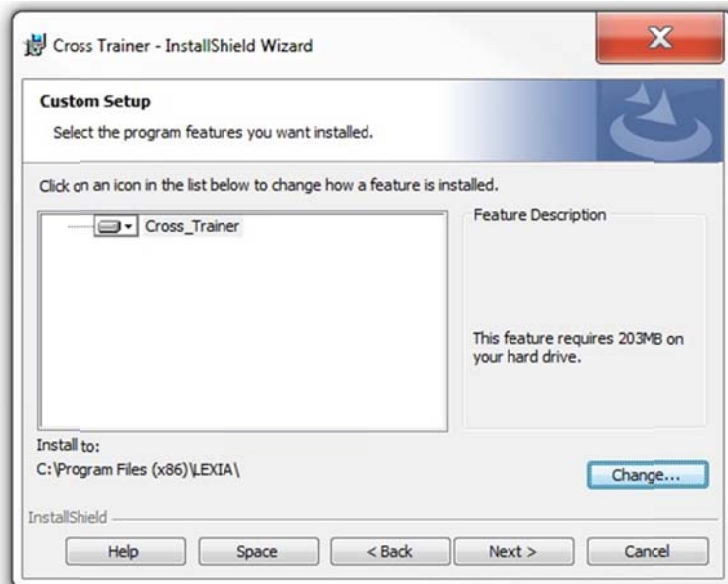
3. Read the terms of the license agreement, and click **I accept the terms in the license agreement**. If you do not accept the license agreement, the installation will not proceed. Click **Next**.



4. Please enter your customer information including your **user name** and your **organization**. Click **Next**.



5. The following window (as shown below) is displayed. Now **single left click** on the words **Cross_Trainer** then **single left click** on the **change** button.

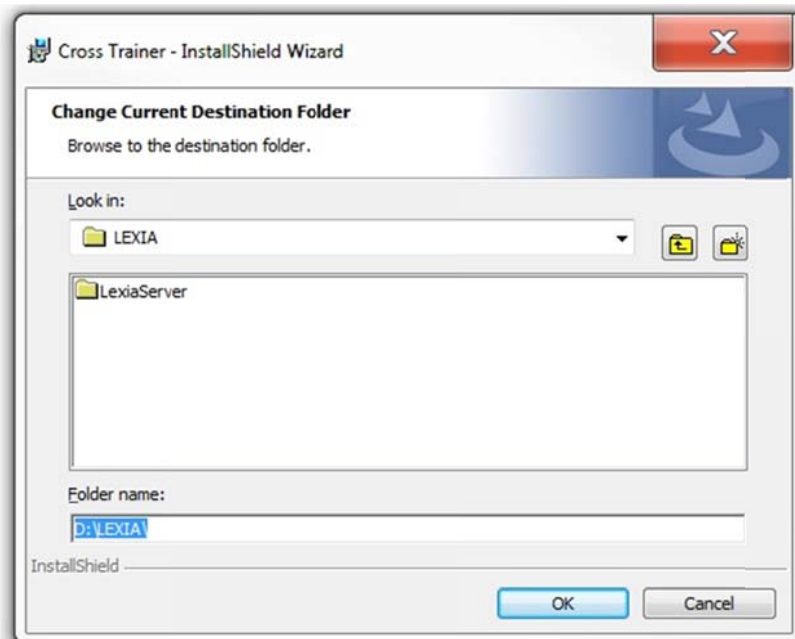


6. After you have clicked on the change button the following window (as shown below) is displayed.

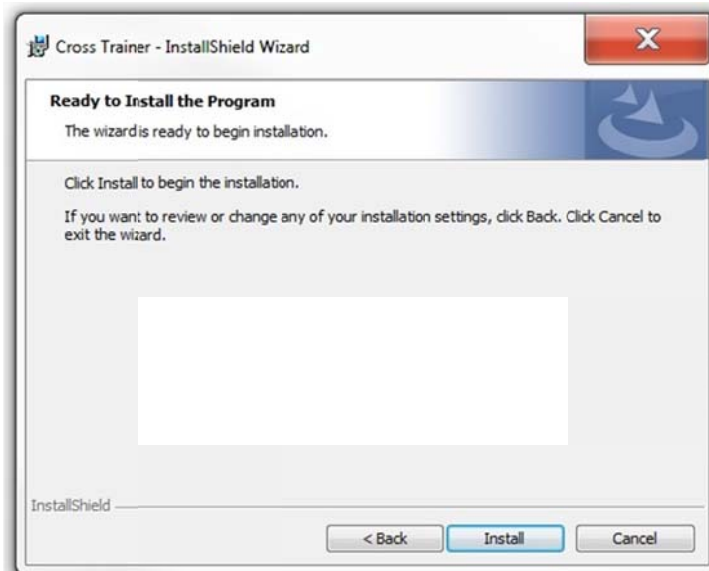
In the folder name box, please type in the location of your LEXIA folder. Then click OK

e.g. if you made a LEXIA folder on D:\ Drive you would type the following

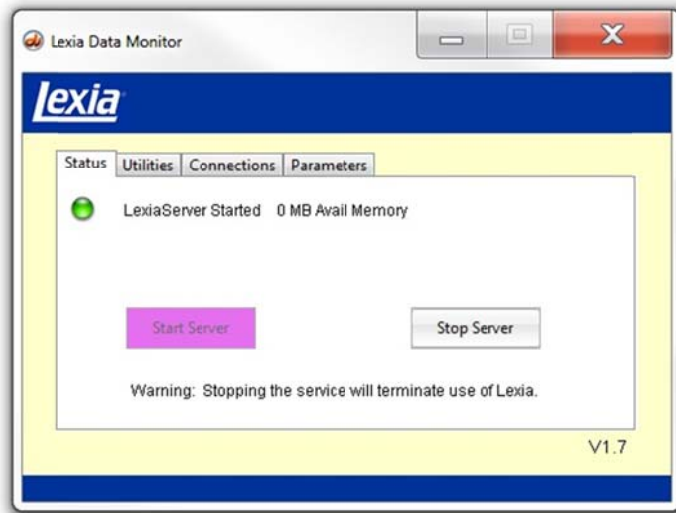
D:\LEXIA



7. Please click the **Install** button to continue the installation.



8. Please click the **Finish** button to complete the installation
9. Once you have completed installation, make sure that your **firewall allows** Lexia to operate through **port 51773**.
10. On your server, double click the **Lexia Data Monitor shortcut** on your server desktop and you should see the following program displayed. Please ensure that the **LexiaServer** status is **started**. If the service is not started please repeat Steps 11-13 in the Configuring Cross Trainer Database Server Service.



11. On your server, **double click** the **Cross Trainer Shortcut**



12. A window will come up saying '**database could not be found**' Click **OK**. Another Window will come up about '**Database Location**' Click on **OK** again. You are now in '**Admin Options**' of the admin side of Lexia Cross Trainer.
13. To set up as a server go down to **server side control** and put the dot into that location. Type in the IP Address of the server or workstation you have just installed Lexia on and intend using as the Lexia Server, then press '**save**'. This should accept and you are now connected to the Lexia Server Database. If it does not save turn your firewall off and re save, if it now saves you need to provide correct permissions for Lexia on your firewall.
14. Go down to **set passwords**, set the **sysadmin** password to a standard I.T. password of your choosing and **save**. Set the **keyadmin** password for teachers, **payday** is a good one that teachers do not forget. Please notify teachers of this password.



15. Lexia is now set up on the computer that you are using as the Lexia server. You now need to copy the 'Lexia Learning' folder into C:\Program files\ on each workstation and make shortcuts. As you have set the IP address within the local admin to look back at the server all data will be sent back to the Lexia database.
16. Go to the utilities tab in the Lexia Data Monitor and then go to Restore Database or Restore, navigate through to your last backup and select the Master VDB file and click on OK. Your Database for Cross Trainer will now be restored.

LEXIA MAINTENANCE

MAKE A FOLDER CALLED 'LEXIA BACKUP FOLDER' ON YOUR SERVER

Open the **Lexia Data Monitor**, go to the **utilities tab**, click on **backup database**, browse to your backup folder and then click on **Ok**.

Go back to the **utilities tab** in the **Lexia Data Monitor** and click on **Compact/Repair database**. Browse to your Lexia backup folder and click on **OK**, this will dump, re index and restore the database. You can write a script to do this automatically or you, or a nominated teacher, can manually carry out this function once a week. This should be carried out whilst no students or teachers are logged onto Lexia.

If you are sure no one is logged into Lexia and it shows a student logged in then a corruption is beginning, just carry on with the compact repair and it will fix this corruption. If this is not carried out on a regular basis and a corruption occurs it will potentially have significant effect on your Lexia database

REMOVING PREVIOUS VERSIONS OF LEXIA

You will need to remove all the old shortcuts from student and teacher desktops as well as removing the old Lexia software from all workstations located in C:\program files. To do this just delete the folder Lexia UK and empty your recycle bin

To Delete Lexia Cross Trainer from the Server computer carry out the following steps

Using the Lexia Data Monitor turn of the Lexia server and then close the Lexia data monitor completely



Windows XP, 2003 Server

Stop the Lexiaserver database service.

Start a Command Line prompt (start->Run..., type 'cmd', press Enter) Type the path where the lexiaserver is installed.

E.g. cd d:\lexiaserver

Type 'lexiaserver.exe -r' and press Enter to unregister the service. Delete the

'd:\lexiaserver' folder and all of its contents.

Now delete all other Lexia folders on the server and the uninstall is complete

Windows 2008 Server

Stop the Lexiaserver database service.

Start a Command Line prompt (start->Run..., type 'cmd', press Enter)

Type **sc delete lexiaserver**

Delete the '\\lexiaserver' folder and all of its contents.

Now delete all other Lexia folders on the server and the uninstall is complete